

# Wrangler®



PRODUCT GUIDE  
**AUTUMN WINTER 2025**



# Wrangler®

PRODUCT GUIDE

**AUTUMN WINTER 2025**



PAGE 2

**WOMEN'S**



PAGE 38

**MEN'S**



PAGE 66

**GIRL'S**



PAGE 74

**BOY'S**



PAGE 82

**ACCESSORIES**

**Please note:** Standard Thomas Cook Boot & Clothing Co. trading terms and conditions apply. All retail prices advertised throughout this book include GST and are subject to change with or without notification. Please note that colours may vary slightly in this catalogue to actual product.

Original garment and product designs are the intellectual property of Thomas Cook Boot & Clothing Co. Pty Ltd and are subject to copyright.

Published March 2025

**Cover Image:** She wears: Jhonson Bangora Hat (Camel) X4Y2025JHO, Chrissy Western Long Sleeve Shirt X5W2127288, Lindy Belt X5W2924BLT, Blair Trousers Jean - Mae XCP2253350 - 34" LEG

Photography by Laura Neumeister.  
Kids photography shoot by Ivan Kemp.  
Extra location photography by Annie Williamson.

Special thanks to Greg & Yvonne Culell of Grevonne Texas Longhorns Stud, Drouin South for the use of their beautiful property. As well as thanks to Paula Scully of Totoka Lodge, Devon Meadows for the kids photoshoot location.



# WOMEN'S

Jhonson Bangora Hat (Camel) X4Y2025JHO,  
Lorna Check Western Long Sleeve Shirt X5W2127335,  
Moree Belt (Dark Tan) X5W2911BLT,  
Verity Jean - Willow XCP2251352 - 34" LEG





Jhonsoon Bangora Hat (Natural) X4Y2025JHO, Celina Check Long Sleeve Shirt X5W2126278, Adele Belt X5W2921BLT, Verity Jean - Willow XCP2251352 - 34" LEG

**Women's Celina Check Long Sleeve Shirt**

X5W2126278

8, 10, 12, 14, 16, 18, 20, 22

99% Cotton / 1% Metallic Yarn Dyed Check

Classic button down long sleeve shirt, button closure, Wrangler® logo pip on side seam

\$109.95 AUD, \$130.95 NZD

BLUE



BACK NECK LOGO EMBROIDERY



FRONT YOKE RUFFLE DETAIL



EXTRA BUTTON AT BUST

Jhonson Bangora Hat (Camel) X4Y2025JHO,  
 Chrissy Western Long Sleeve Shirt  
 X5W2127288, Lindy Belt X5W2924BLT, Blair  
 Trousers Jean - Mae XCP2253350 - 34" LEG



**Women's Chrissy  
 Western Long  
 Sleeve Shirt**

X5W2127288

8, 10, 12, 14, 16, 18, 20, 22

100% Cotton

Classic western long sleeve shirt, pearl snap closure, western chest pockets with Wrangler® stitching, western front and back yokes, Wrangler® logo pip on side seam

\$109.95 AUD, \$130.95 NZD

DENIM



BACK NECK  
 LOGO EMBROIDERY



FRONT AND BACK  
 YOKE HAND DRAWN  
 PAISLEY EMBROIDERY



EXTRA SNAP  
 AT BUST



BACK NECK  
LOGO PRINT



ORIGINAL HAND  
DRAWN CACTUS PRINT



EXTRA BUTTON  
AT BUST



IVORY

**Women's Valerie  
Print Long Sleeve Shirt**

X5W2126337

8, 10, 12, 14, 16, 18, 20, 22

100% Viscose Print

Classic button down long sleeve shirt, button closure, Wrangler® logo pip on side seam, soft handfeel and drape

\$109.95 AUD, \$130.95 NZD



Valerie Print Long Sleeve Shirt X5W2126337, Adele Belt X5W2921BLT, Verity Jean - Willow XCP2251352 - 34" LEG



BACK NECK  
LOGO PRINT



ORIGINAL HAND  
DRAWN PAISLEY PRINT



EXTRA BUTTON  
AT BUST



NAVY

**Women's Jolene  
Print Long  
Sleeve Shirt**

X5W2126285

8, 10, 12, 14, 16, 18, 20, 22

100% Viscose Print

Classic button down long sleeve shirt, print with Wrangler® branding, button closure, Wrangler® logo pip on side seam, soft handfeel and drape

\$109.95 AUD, \$130.95 NZD



Jhonson Bangora Hat (Camel) X4Y2025JHO, Jolene Print Long Sleeve Shirt X5W2126285, Adele Belt X5W2921BLT, Tia Straight Leg Jean X5W2257351 - 34" LEG





Jhonson Bangora Hat (Camel) X4Y2025JHO,  
Astrid Check Western Long Sleeve Shirt  
X5W2127336, Lindy Belt X5W2924BLT, Blair  
Trouser Jean - Mae XCP2253350 - 34" LEG



BACK NECK  
LOGO EMBROIDERY



YARN DYED  
CHECK



EXTRA SNAP  
AT BUST



PINK

Classic western long sleeve shirt, pearl snap closure, western chest pockets, western front and back yokes, Wrangler® logo pip on side seam

\$109.95 AUD, \$130.95 NZD

**Women's Astrid  
Check Western  
Long Sleeve Shirt**

X5W2127336

8, 10, 12, 14, 16, 18, 20, 22

100% Cotton Yarn  
Dyed Check



BACK NECK  
LOGO EMBROIDERY



HAND DRAWN WESTERN  
NOVELTY PRINT



EXTRA SNAP  
AT BUST



AQUA

Classic western long sleeve shirt, pearl snap closure, western chest pockets, western front and back yokes, Wrangler® logo pip on side seam

\$109.95 AUD, \$130.95 NZD

**Women's Janice  
Print Western Long  
Sleeve Shirt**

X5W2127338

8, 10, 12, 14, 16, 18, 20, 22

100% Cotton Print



BACK NECK  
LOGO EMBROIDERY



YOKE CORDED  
PIPING DETAIL



EXTRA SNAP  
AT BUST



PINK

**Women's Phoebe  
Check Long  
Sleeve Shirt**

X5W2129289

8, 10, 12, 14, 16, 18, 20, 22

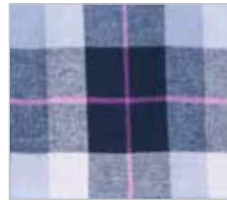
100% Cotton Yarn  
Dyed Check

Western long sleeve shirt, puff sleeve detail with gathered sleeve head, pearl snap closure, western front and back yokes, Wrangler® logo pip on side seam

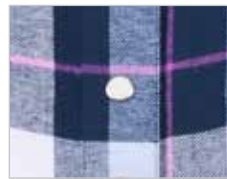
\$109.95 AUD, \$130.95 NZD



BACK NECK  
LOGO EMBROIDERY



YARN DYED  
CHECK



EXTRA SNAP  
AT BUST



NAVY

**Women's Lorna  
Check Western  
Long Sleeve Shirt**

X5W2127335

8, 10, 12, 14, 16, 18, 20, 22

100% Cotton Yarn  
Dyed Check

Classic western long sleeve shirt, pearl snap closure, western chest pockets, western front and back yokes, Wrangler® logo pip on side seam

\$109.95 AUD, \$130.95 NZD

Maredo Hat XCP1942HAT, Phoebe  
Check Long Sleeve Shirt X5W2129289,  
Adele Belt X5W2921BLT, Tia Straight  
Leg Jean X5W2257351 - 34" LEG





Jhonson Bangora Hat (Natural) X4Y2025JHO,  
Lorna Check Western Long Sleeve Shirt  
X5W2127335, Moree Belt (Dark Tan) X5W2911BLT,  
Verity Jean - Willow XCP2251352 - 34" LEG

PRICES ARE RRP

Bridie Long Sleeve Blouse X5W2513332,  
 Bandera Hat (Natural) X5W1911HAT, Verity  
 Jean - Willow XCP2251352 - 34" LEG



**Women's Bridie  
 Long Sleeve Blouse**

X5W2513332

8, 10, 12, 14, 16, 18, 20, 22

100% Viscose

Long sleeve blouse, gathering on front and back yoke and sleeves, ladder lace detail at front and back yokes and sleeves, centre front button up detail with self covered buttons, elasticated sleeve cuffs, Wrangler® logo pip on side seam, soft handfeel and drape  
 \$139.95 AUD, \$167.95 NZD

NAVY



FRONT HEM LOGO EMBROIDERY



TASSEL DETAIL



FRONT YOKE ORIGINAL HAND DRAWN EMBROIDERY



V-NECK WITH FRILL



FRONT HEM LOGO EMBROIDERY



ORIGINAL HAND DRAWN FLORAL/ GEOMETRIC PRINT



NAVY

Long sleeve blouse, v-neck with front tie and tassel detail, centre front button up detail with shell buttons, shirred detail at waist, gathering at front and back neck, elasticated sleeve cuffs, Wrangler® logo pip on side seam, soft handfeel and drape

\$124.95 AUD, \$148.95 NZD



Lindsey Long Sleeve Blouse X5W2543295, Verity Jean - Willow XCP2251352 - 34" LEG

**Women's Lindsey Long Sleeve Blouse**

X5W2543295

8, 10, 12, 14, 16, 18, 20, 22

100% Viscose



V-NECK WITH FRILL



EMBROIDERED AZTEC DESIGN FABRIC



FRONT HEM LOGO EMBROIDERY



BLUSH

Long sleeve blouse, v-neck with front tie and tassel detail, gathering at sleeve head, lace detail, elasticated sleeve cuffs, Wrangler® logo pip on side seam, soft handfeel and drape

\$154.95 AUD, \$185.95 NZD



Neave Long Sleeve Blouse X5W2513333, Verity Jean - Willow XCP2251352 - 34" LEG

**Women's Neave Long Sleeve Blouse**

X5W2513333

8, 10, 12, 14, 16, 18, 20, 22

100% Viscose



Taryn High Profile Trucker Cap X5W2946CAP,  
Layla Short Sleeve Tee (Copper) X5W2598290,  
Blair Trouser Jean - Mae XCP2253350 - 34" LEG



BACK NECK  
LOGO PRINT



ORIGINAL HAND DRAWN  
PRINTED DESIGN



KHAKI MARLE



COPPER

**Women's Layla  
Short Sleeve Tee**

X5W2598290

8, 10, 12, 14, 16, 18, 20, 22

Copper: 100% Cotton Jersey,  
180gsm

Khaki Marle: 60% Cotton /  
40% Polyester Marle Jersey,  
180gsm

Classic tee shape with rolled sleeve  
hem detail, rib neck band, Wrangler®  
logo pip on side seam

\$64.95 AUD, \$79.95 NZD



Elise High Profile Ponytail Trucker Cap  
X5W2939CAP, Giselle Short Sleeve Tee  
X5W2598291, Moree Belt X5W2911BLT,  
Tia Straight Leg Jean X5W2257351 - 34" LEG



BACK NECK LOGO  
METALLIC PRINT



ORIGINAL HAND DRAWN  
PRINTED DESIGN WITH  
METALLIC DETAIL



PINK

**Women's Giselle  
Short Sleeve Tee**

X5W2598291

8, 10, 12, 14, 16, 18, 20, 22

100% Cotton Jersey,  
180gsm

Classic tee shape with rolled sleeve  
hem detail, rib neck band, Wrangler®  
logo pip on side seam

\$64.95 AUD, \$79.95 NZD



BACK NECK LOGO PRINT



ORIGINAL HAND DRAWN PRINTED DESIGN



LIGHT BLUE

**Women's Athena Short Sleeve Tee**

X5W2598293

8, 10, 12, 14, 16, 18, 20, 22

100% Cotton Jersey, 180gsm

Classic tee shape with rolled sleeve hem detail, rib neck band, Wrangler® logo pip on side seam

\$64.95 AUD, \$79.95 NZD



Athena Short Sleeve Tee X5W2598293, Moree Belt (Dark Tan) X5W2911BLT, Tia Straight Leg Jean X5W2257351 - 34" LEG



BACK NECK LOGO METALLIC PRINT



WESTERN YOKE STYLE TEE



ORIGINAL HAND DRAWN PRINTED DESIGN WITH METALLIC DETAIL



NAVY

**Women's Claudia Long Sleeve Tee**

X5W2598292

8, 10, 12, 14, 16, 18, 20, 22

100% Cotton Jersey, 180gsm

Long sleeve tee - ideal for all year round, neck bind, Wrangler® logo pip on side seam

\$74.95 AUD, \$89.95 NZD



Shanice Trucker Cap X5W2942CAP, Claudia Long Sleeve Tee X5W2598292, Blair Trouser Jean - Mae XCP2253350 - 34" LEG



Daisy Stripe Rugby X5W2577298,  
Tia Straight Leg Jean X5W2257351 - 34" LEG



BACK NECK EMBROIDERY



FRONT FEATURE LOGO APPLIQUÉ



NAVY/PINK

**Women's Daisy Stripe Rugby**

X5W2577298

8, 10, 12, 14, 16, 18, 20, 22

100% Cotton Rugby Jersey  
Yarn Dyed Stripe,  
Peached, 330gsm

Heavyweight jersey knit rugby, contrast feature panel on body and sleeves, concealed buttons on centre front placket, cotton drill collar, Wrangler® iconic logo herringbone tape on back neck and inside side seam splits, rib trim cuffs

\$139.95 AUD, \$167.95 NZD



BACK NECK EMBROIDERY



FRONT FEATURE METALLIC EMBROIDERY



NAVY/FUCHSIA

**Women's Moira Fashion Stripe Rugby**

X5W2577302

8, 10, 12, 14, 16, 18, 20, 22

100% Cotton Rugby Jersey  
Yarn Dyed Stripe,  
Peached, 330gsm

Heavyweight jersey knit rugby, shorter length fashion style, concealed buttons on centre front placket, cotton drill collar, Wrangler® iconic logo herringbone tape on back neck, rib trim cuffs

\$139.95 AUD, \$167.95 NZD



BACK NECK EMBROIDERY



CHEST METALLIC EMBROIDERY



NAVY/MULTI

**Women's Camden Stripe Rugby**

X5W2577303

8, 10, 12, 14, 16, 18, 20, 22

100% Cotton Rugby Jersey  
Yarn Dyed Stripe,  
Peached, 330gsm

Heavyweight jersey knit rugby, concealed buttons on centre front placket, cotton drill collar, Wrangler® iconic logo herringbone tape on back neck and inside side seam splits, rib trim cuffs

\$139.95 AUD, \$167.95 NZD





BACK NECK  
LOGO EMBROIDERY



FRONT FEATURE  
LOGO EMBROIDERY



OLIVE/WHITE

**Women's Eliza  
Stripe Rugby**

X5W2577299

8, 10, 12, 14, 16, 18, 20, 22

100% Cotton Rugby Jersey  
Yarn Dyed Stripe,  
Peached, 330gsm

Heavyweight jersey knit rugby,  
contrast feature panel on body and  
sleeves, concealed buttons on centre  
front placket, cotton drill collar,  
Wrangler® iconic logo herringbone  
tape on back neck and inside side  
seam splits, rib trim cuffs

\$139.95 AUD, \$167.95 NZD



Petra High Profile Ponytail Trucker Cap  
X5W2940CAP, Eliza Stripe Rugby X5W2577299,  
Tia Straight Leg Jean X5W2257351 - 34" LEG



Elise High Profile Ponytail Trucker Cap  
X5W2939CAP, Faith Stripe Rugby X5W2577301,  
Tia Straight Leg Jean X5W2257351 - 34" LEG



BACK NECK  
EMBROIDERY



CHEST METALLIC  
EMBROIDERY



NAVY/MULTI

**Women's Faith  
Stripe Rugby**

X5W2577301

8, 10, 12, 14, 16, 18, 20, 22

100% Cotton Rugby Jersey  
Yarn Dyed Stripe,  
Peached, 330gsm

Heavyweight jersey knit rugby,  
concealed buttons on centre  
front placket, cotton drill collar, Wrangler®  
iconic logo herringbone tape on back  
neck and inside side seam splits, rib  
trim cuffs

\$139.95 AUD, \$167.95 NZD



BACK NECK EMBROIDERY



CHEST METALLIC EMBROIDERY



NAVY/AQUA

**Women's Trista Stripe Rugby**

X5W2577330

8, 10, 12, 14, 16, 18, 20, 22

100% Cotton Rugby Jersey Yarn Dyed Stripe, Peached, 330gsm

Heavyweight jersey knit rugby, concealed buttons on centre front placket, cotton drill collar, Wrangler® iconic logo herringbone tape on back neck and inside side seam splits, rib trim cuffs

\$139.95 AUD, \$167.95 NZD



Quinn High Profile Ponytail Trucker Cap X5W2943CAP, Trista Stripe Rugby X5W2577330, Tia Straight Leg Jean X5W2257351 - 34" LEG



BACK NECK LOGO EMBROIDERY



FRONT FEATURE METALLIC LOGO EMBROIDERY



NAVY

**Women's Helga Rugby**

X5W2577331

8, 10, 12, 14, 16, 18, 20, 22

100% Cotton Rugby Jersey, Peached, 330gsm

Heavyweight jersey knit rugby, concealed buttons on centre front placket, contrast cotton drill collar, Wrangler® iconic logo herringbone tape on back neck and inside side seam splits, rib trim cuffs

\$139.95 AUD, \$167.95 NZD



Elise High Profile Ponytail Trucker Cap X5W2939CAP, Helga Rugby X5W2577331, Tia Straight Leg Jean X5W2257351 - 34" LEG



Tabitha Crew X5W2527305,  
Tia Straight Leg Jean X5W2257351 - 34" LEG

TURQUOISE

**Women's Tabitha Crew**  
X5W2527305

8, 10, 12, 14, 16, 18, 20, 22  
80% Cotton /  
20% Polyester Brushed  
Fleece, 320gsm

Heavyweight brushed fleece crew,  
Wrangler® iconic logo herringbone  
tape on back neck, rib trim hem with  
stripe neck and cuff detail, Wrangler®  
logo pip on side seam

\$109.95 AUD, \$130.95 NZD



BACK NECK LOGO  
EMBROIDERY



FRONT FEATURE  
BOUCLÉ APPLIQUÉ  
AND EMBROIDERY

Jhonson Bangora Hat (Camel) X4Y2025JHO,  
Lisa Pullover Hoodie X5W2528310, Paige High  
Rise Jean XCP2255355 - 34" LEG





BACK NECK LOGO EMBROIDERY



FRONT FEATURE METALLIC EMBROIDERY



NAVY

**Women's Kylie Crew**

X5W2587311

8, 10, 12, 14, 16, 18, 20, 22

80% Cotton / 20% Polyester Brushed Fleece, 320gsm

Heavyweight brushed fleece crew, Wrangler® iconic logo herringbone tape on back neck, rib trim (hem, neck and cuffs), Wrangler® logo pip on side seam

\$109.95 AUD, \$130.95 NZD



Elise High Profile Ponytail Trucker Cap X5W2939CAP, Kylie Crew X5W2587311, Tia Straight Leg Jean X5W2257351 - 34" LEG



SMALL CHEST LOGO EMBROIDERY



TEXTURED RIB KNIT



SAGE

**Women's Lisa Pullover Hoodie**

X5W2528310

8, 10, 12, 14, 16, 18, 20, 22

Main: 60% Cotton / 40% Polyester, Textured Rib 340gsm

Sleeve: 80% Cotton / 20% Polyester Brushed Fleece, 320gsm

Heavyweight brushed fleece pullover, textured rib knit (hood, front and back body), hood with drawcord and branded metal trims, front kanga patch pocket, Wrangler® iconic logo herringbone tape on back neck, rib trim hem and cuff detail, Wrangler® logo pip on side seam

\$129.95 AUD, \$155.95 NZD



FRONT FEATURE LOGO EMBROIDERY



CHARCOAL MARLE

**Women's Lola Zip Through Hoodie**

X5W2587322

8, 10, 12, 14, 16, 18, 20, 22

80% Cotton / 20% Polyester Brushed Fleece, 320gsm

Heavyweight brushed fleece hooded jacket, hood (with contrast lining, drawcord and branded metal trims), front kanga patch pockets, Wrangler® iconic logo herringbone tape on back neck, rib trim hem and cuffs, Wrangler® logo pip on side seam

\$139.95 AUD, \$167.95 NZD

Jhonson Bangora Hat (Camel) X4Y2025JHO,  
 Sarah Pullover Hoodie X5W2597308,  
 Paige High Rise Jean XCP2255355 - 34" LEG



CORAL

**Women's Sarah  
 Pullover Hoodie**

X5W2597308

8, 10, 12, 14, 16, 18, 20, 22

80% Cotton /  
 20% Polyester Brushed  
 Fleece, 320gsm

Heavyweight brushed fleece pullover,  
 hood with drawcord and branded  
 metal trims, front kangaroo pocket,  
 Wrangler® iconic logo herringbone  
 tape on back neck, stripe rib trim hem  
 and cuff detail, Wrangler® logo pip on  
 side seam

\$129.95 AUD, \$155.95 NZD



FRONT FEATURE  
 LOGO APPLIQUE



Sammy Pullover Hoodie X5W2515307,  
Tia Straight Leg Jean X5W2257351 - 34" LEG



FRONT FEATURE  
APPLIQUÉ



DARK NAVY

**Women's Sammy  
Pullover Hoodie**

X5W2515307

8, 10, 12, 14, 16, 18, 20, 22

80% Cotton /  
20% Polyester Brushed  
Fleece, 320gsm

Heavyweight brushed fleece pullover,  
hood with drawcord and branded  
metal trims, front kanga patch pocket,  
Wrangler® iconic logo herringbone  
tape on back neck, rib trim cuffs,  
drawcord at hem, Wrangler® logo pip  
on side seam

\$129.95 AUD, \$155.95 NZD



FRONT FEATURE  
LOGO APPLIQUÉ



NAVY/PINK

**Women's Mindy  
Pullover Hoodie**

X5W2597309

8, 10, 12, 14, 16, 18, 20, 22

80% Cotton /  
20% Polyester Brushed  
Fleece, 320gsm

Heavyweight brushed fleece pullover,  
cut 'n' sew contrast panelling, hood  
with drawcord and branded metal  
trims, front kanga patch pocket,  
Wrangler® iconic logo herringbone  
tape on back neck, rib trim hem  
and cuffs, Wrangler® logo pip on  
side seam

\$129.95 AUD, \$155.95 NZD



Jhonson Bangora Hat (Camel) X4Y2025JHO,  
 Ruby Knitted Pullover X5W2517324,  
 Paige High Rise Jean XCP2255355 - 34" LEG



SIDE SEAM SPLITS



FRONT PANEL AND SLEEVE KNITTED AZTEC DESIGN



CLAY

**Women's Ruby Knitted Pullover**

X5W2517324

8, 10, 12, 14, 16, 18, 20, 22

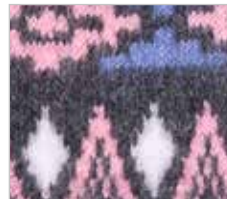
65% Acrylic / 24% Polyester / 8% Wool / 3% Elastane, 7 Gauge

Fully fashion knitted crew neck jumper, rib trim (neck, sleeve cuffs and hem edge), Wrangler® logo pip on side seam

\$139.95 AUD, \$167.95 NZD



STEP HEM WITH LONGER BACK



ALL OVER KNITTED AZTEC DESIGN



MULTI

**Women's Freya Knitted Pullover**

X5W2535326

8, 10, 12, 14, 16, 18, 20, 22

65% Acrylic / 24% Polyester / 8% Wool / 3% Elastane, 7 Gauge

Fully fashion knitted crew neck jumper, reverse knit on sleeves, rib trim (on neck, sleeve cuffs and hem edge), Wrangler® logo pip on side seam

\$139.95 AUD, \$167.95 NZD





Freya Knitted Pullover X5W2535326,  
Blair Trouser Jean - Mae XCP2253350 - 34" LEG

PRICES ARE RRP

Erica Knitted Cardigan X5W2533325,  
Tia Straight Leg Jean X5W2257351 - 34" LEG



Erica Knitted Cardigan X5W2533325,  
Layla Short Sleeve Tee (Copper) X5W2598290,  
Tia Straight Leg Jean X5W2257351 - 34" LEG



KNITTED AZTEC BORDER DESIGN

**Women's Erica Knitted Cardigan**

X5W2533325

XS, S, M, L, XL, XXL, 3XL

73% Nylon / 17% Viscose / 10% Polyester, 12 Gauge

Fully fashion knitted cardigan with hood, longer line style, hook and eye closure, front patch pockets, Wrangler® logo pip on side seam



\$219.95 AUD, \$259.95 NZD

CREAM



FRONT AND BACK BODY KNITTED AZTEC DESIGN



CHARCOAL

**Women's Angie 1/4 Zip Knitted Pullover**

X5W2532323

8, 10, 12, 14, 16, 18, 20, 22

65% Acrylic / 24% Polyester / 8% Wool / 3% Elastane, 7 Gauge

Fully fashion knitted 1/4 zip neck jumper, rib trim on collar, sleeve cuffs and hem edge, Wrangler® logo pip on side seam

\$159.95 AUD, \$190.95 NZD



Angie 1/4 Zip Knitted Pullover X5W2532323, Blair Trousers Jean - Mae XCP2253350 - 34" LEG



She wears: Jhonson Bangora Hat (Camel) X4Y2025JHO, Denver Reversible Vest X5W2694314, Jolene Long Sleeve Shirt X5W2126285, Tia Straight Leg Jean X5W2257351 - 34" LEG  
 He wears: Bandera Hat X5W1911HAT (Black), Cade Logo Softshell Jacket X5W1773262, Finn Check Logo Western Long Sleeve Shirt X5W1111228, Retro® Slim Straight Jean 88MWZJM34 - 34" LEG

**Women's Denver Reversible Vest**

X5W2694314

XS, S, M, L, XL, XXL, 3XL

Shell: 100% Polyester

Lining: 100% Polyester



Reversible vest with fur option, quilted front and back panels, side panels for shaping, elasticated waist detail, side pockets with concealed zipper closure, centre front metal zip closure



NAVY/CHARCOAL



CHEST METALLIC LOGO EMBROIDERY



LONGER CURVED BACK HEM

\$184.95 AUD, \$217.95 NZD



Jhonson Bangora Hat (Natural) X4Y2025JHO,  
 Denver Reversible Jacket X5W2790313, Lorna  
 Check Western Long Sleeve Shirt X5W2127335,  
 Verity Jean - Willow XCP2251352 - 34" LEG

**Women's Denver  
 Reversible Jacket**

X5W2790313

XS, S, M, L, XL, XXL, 3XL

Shell: 100% Polyester

Lining: 100% Polyester



Reversible jacket with fur option,  
 quilted front and back panels, side  
 panels for shaping, elasticated waist  
 detail, side pockets with concealed  
 zipper closure, centre front metal  
 zip closure



NAVY/CHARCOAL



CHEST METALLIC  
 LOGO EMBROIDERY



LONGER CURVED  
 BACK HEM

\$244.95 AUD, \$291.95 NZD

Brodie Hat XCP1961HAT, Selma Vest X5W2694315,  
 Claudia Long Sleeve Tee X5W2598292, Blair Trouser  
 Jean - Mae XCP2253350 - 34" LEG



**Women's Selma Vest**

X5W2694315

XS, S, M, L, XL, XXL, 3XL

Shell: 90% Polyester / 10% Wool

Yarn Dyed Check

Lining: 100% Polyester



Zip through quilted vest, internal fleece body lining for comfort and warmth, contrast inside sherpa collar, front storm flap with concealed zip closure and metal snaps, front welt pockets with snap closure (lined for warmth), rust proof metal trims

\$184.95 AUD, \$217.95 NZD



NAVY



CHEST METALLIC LOGO EMBROIDERY



YARN DYED CHECK



HEM LOGO MOCK LEATHER BADGE

Ghano Beanie (Navy/Pink) X5W1959BEA,  
 Selma Shirt Jacket X5W2776318, Blair Trousers  
 Jean - Mae XCP2253350 - 34" LEG



**Women's Selma Shirt Jacket**

X5W2776318

XS, S, M, L, XL, XXL, 3XL

Shell: 90% Polyester / 10% Wool

Yarn Dyed Check

Lining: 100% Polyester



Classic lumberjack style jacket,  
 fleece-lined body for comfort and  
 warmth, chest and front side pockets  
 with metal snaps (lined for warmth)



NAVY



YARN DYED  
 CHECK



HEM LOGO MOCK  
 LEATHER BADGE

\$259.95 AUD, \$307.95 NZD

**Women's Demi Jacket**

X5W2798319

XS, S, M, L, XL, XXL, 3XL

Shell: 100% Polyester

Lining: 100% Polyester

Durable heavyweight polyester jacket, sleeve quilted satin finish for comfort and warmth, front storm flap with concealed zip closure and metal snaps, front patch pockets with metal snaps and side opening (lined for warmth), sleeve tabs with adjustable metal snaps, longer curved back hem, side seam splits with metal snaps

\$299.95 AUD, \$355.95 NZD



BLUE



DETACHABLE HOOD WITH AZTEC FABRIC



WOVEN JACQUARD AZTEC FABRIC LINING



INTERNAL ADJUSTABLE WAIST DRAWCORD WITH TOGGLES



POCKET LOGO RUBBER LABEL



Demi Jacket X5W2798319, Blair Trousers  
Jean - Mae XCP2253350 - 34" LEG





Lindy Jacket X5W2700320,  
Layla Short Sleeve Tee (Copper) X5W2598290,  
Blair Trouser Jean - Mae XCP2253350 - 34" LEG

**Women's Lindy Jacket**

X5W2700320

XS, S, M, L, XL, XXL, 3XL

Shell: 80% Cotton /

20% Polyester, 9.75oz

Contrast: 100% Polyester

Denim bomber jacket, cuffs with snap opening, front welt pockets, elastic at hem panel, Wrangler® logo antique nickel snaps



CHEST LOGO EMBROIDERY



CONTRAST PANEL WOVEN JACQUARD AZTEC FABRIC

DENIM/MULTI

\$164.95 AUD, \$195.95 NZD

**Women's Heidi Softshell Jacket**

X5W2714317

XS, S, M, L, XL, XXL, 3XL

Shell: 90% Polyester / 10% Elastane

Lining: 100% Polyester

Zip through padded parka jacket, waterproof softshell fabric, side pockets with zipper closure, internal chest pocket, rib cuffs and neck band, longer curved back hem, internal adjustable drawcord at waist and toggles for flattering shape, hood with sherpa lining, internal sherpa body lining for comfort and warmth, back gusset panel with invisible zip

\$269.95 AUD, \$321.95 NZD



NAVY



DETACHABLE HOOD



ABOVE CUFF LOGO METALLIC EMBROIDERY



SLEEVE LOGO METALLIC EMBROIDERY



INTERNAL ADJUSTABLE WAIST DRAWCORD AND TOGGLES



Heidi Softshell Jacket X5W2714317,  
Angie 1/4 Zip Knitted Pullover X5W2532323,  
Blair Trousers Jean - Mae XCP2253350 - 34" LEG

**MAE  
RETRO**

MID-RISE

MID-RISE  
**TROUSER  
JEAN**  
34" LEG



Mae

MID INDIGO



FEATURE BACK POCKET  
EMBROIDERY



Jhonson Bangora Hat (Camel) X4Y2025JHO,  
Chrissy Western Long Sleeve Shirt  
X5W2127288, Lindy Belt X5W2924BLT, Blair  
Trouser Jean - Mae XCP2253350 - 34" LEG

**Women's Blair Trouser  
Jean - Mae - 34" Leg**

XCP2253350

0, 1, 3, 5, 7, 9, 11, 13, 15,  
17, 19

91% Cotton / 7% Polyester /  
2% Elastane Stretch Denim  
11.5oz

Trouser jean, mid rise, contour waist,  
stretch for comfort and movement,  
more room at the knee and a gradual  
opening down the leg, 2 front scoop  
pockets, patch coin pocket, logo  
shank button

**NEW STOCKLINES**

\$134.95 AUD, \$181.95 NZD

**WILLOW  
ULTIMATE RIDING JEAN**

MID-RISE

MID-RISE  
BOOT CUT  
JEAN  
34" LEG



*Wrangler*  
*The Ultimate Riding Jean*  
*Willow*

**PERFORMANCE  
WAIST**

DARK INDIGO



FEATURE BACK POCKET  
EMBROIDERY



Celina Check Long Sleeve Shirt  
X5W2126278, Adele Belt X5W2921BLT,  
Verity Jean - Willow XCP2251352 - 34" LEG

**Women's Verity  
Jean - Willow - 34" Leg**  
XCP2251352

0, 1, 3, 5, 7, 9, 11, 13, 15,  
17, 19

91% Cotton / 7% Polyester /  
2% Elastane Stretch Denim  
11.5oz

Boot cut, mid rise, **performance waist**, stretch for comfort and movement, no gap elastic waistband, fitted seat and thigh, logo shank button, logo embroidery on coin pocket

**NEW STOCKLINES**

\$134.95 AUD, \$181.95 NZD

**RETRO**  
MID-RISE



Athena Short Sleeve Tee X5W2598293,  
Moree Belt X5W2911BLT,  
Tia Straight Leg Jean X5W2257351 - 34" LEG



DARK INDIGO



FEATURE BACK POCKET EMBROIDERY

**Women's Tia Straight Leg Jean - 34" Leg**

X5W2257351

0, 1, 3, 5, 7, 9, 11, 13, 15, 17, 19

91% Cotton / 7% Polyester / 2% Elastane Stretch Denim  
11.5oz

Straight leg, mid rise, fits snugly around your favourite shoes, stretch for comfort and movement, patch coin pocket, logo shank button

\$134.95 AUD, \$181.95 NZD



Ruby Knitted Pullover X5W2517324,  
Paige High Rise Jean XCP2255355 - 34" LEG

**RETRO**  
HIGH-RISE

HIGH-RISE  
**BOOT CUT**  
JEAN  
34" LEG



FADED SKY



FEATURE BACK POCKET  
EMBROIDERY AND PRINT

**Women's Paige  
High Rise Jean - 34" Leg**  
XCP2255355

0, 1, 3, 5, 7, 9, 11, 13, 15,  
17, 19

91% Cotton / 7% Polyester /  
2% Elastane Stretch Denim  
11.5oz

Boot cut, high rise, stretch for  
comfort and movement, patch  
coin pocket, logo shank button

**NEW STOCKLINES**

\$134.95 AUD, \$181.95 NZD



Jhonson Bangora Hat (Camel) X4Y2025JHO,  
Ruby Knitted Pullover X5W2517324,  
Paige High Rise Jean XCP2255355 - 34" LEG

PRICES ARE RRP

# MEN'S







Jhonson Bangora Hat (Camel) X4Y2025JHO,  
Jay Denim Western Long Sleeve Shirt  
X5W1111850, Ferris Belt XCP1975BLT, Retro®  
Slim Straight Jean 88MWZJM34 - 34" LEG

Brodie Hat XCP1961HAT, Hugo Check Logo  
Western Long Sleeve Shirt X5W1111225,  
Ferris Belt XCP1975BLT, Jimmy Tailored  
5-Pocket Pant 34" Leg (Sand) X5W1225263





BACK NECK LOGO EMBROIDERY



YARN DYED CHECK



CONTRAST INSIDE CUFF



NAVY/RED

**Men's Hugo Check Western Long Sleeve Shirt**

X5W1112225

XS, S, M, L, XL, XXL, 3XL, 4XL

100% Cotton Yarn Dyed Check

Classic western long sleeve shirt, snap closure, western chest pockets (one with pen holder), western front and back yokes, contrast trim on inside collar stand

\$119.95 AUD, \$144.95 NZD



SLEEVE LOGO EMBROIDERY



NAVY/RED

**Men's Hugo Check Logo Western Long Sleeve Shirt**

X5W1111225

XS, S, M, L, XL, XXL, 3XL, 4XL

100% Cotton Yarn Dyed Check

Classic western long sleeve shirt, snap closure, western chest pockets (one with pen holder), western front and back yokes, contrast trim on inside collar stand and sleeve cuffs, Wrangler® iconic logo back neck embroidery

\$119.95 AUD, \$144.95 NZD



BACK NECK LOGO EMBROIDERY



GEOMETRIC PRINT



CONTRAST INSIDE CUFF



BLUE/TEAL

**Men's Jude Print Western Long Sleeve Shirt**

X5W1112226

XS, S, M, L, XL, XXL, 3XL, 4XL

100% Cotton Print

Classic western long sleeve shirt, snap closure, western chest pockets (one with pen holder), western front and back yokes, contrast trim on inside collar stand

\$119.95 AUD, \$144.95 NZD



SLEEVE LOGO EMBROIDERY



BLUE/TEAL

**Men's Jude Print Logo Western Long Sleeve Shirt**

X5W1111226

XS, S, M, L, XL, XXL, 3XL, 4XL

100% Cotton Print

Classic western long sleeve shirt with geometric print, snap closure, western chest pockets (one with pen holder), western front and back yokes, contrast trim on inside collar stand and sleeve cuffs, Wrangler® iconic logo back neck embroidery

\$119.95 AUD, \$144.95 NZD



Mason 6 Panel Trucker Cap X5W1947CAP,  
Men's Milo Check Logo Western Long Sleeve  
Shirt X5W1111227, Ferris Belt XCP1975BLT,  
Jimmy Tailored 5-Pocket Pant 34" Leg  
X5W1225263 (Sand)



BACK NECK LOGO EMBROIDERY



YARN DYED CHECK



CONTRAST INSIDE CUFF



TAN/NAVY

**Men's Milo Check Western Long Sleeve Shirt**

X5W1111227

XS, S, M, L, XL, XXL, 3XL, 4XL

100% Cotton Yarn Dyed Check

Classic western long sleeve shirt, snap closure, western chest pockets (one with pen holder), western front and back yokes, contrast trim on inside collar stand

\$119.95 AUD, \$144.95 NZD



SLEEVE LOGO EMBROIDERY



TAN/NAVY

**Men's Milo Check Logo Western Long Sleeve Shirt**

X5W1111227

XS, S, M, L, XL, XXL, 3XL, 4XL

100% Cotton Yarn Dyed Check

Classic western long sleeve shirt, snap closure, western chest pockets (one with pen holder), western front and back yokes, contrast trim on inside collar stand and sleeve cuffs, Wrangler® iconic logo back neck embroidery

\$119.95 AUD, \$144.95 NZD





Bandera Hat X5W1911HAT (Black), Finn Check Logo Western Long Sleeve Shirt X5W111228, Rory Belt X5W1972BLT, Retro® Slim Straight Jean 88MWZJM34 - 34" LEG



BACK NECK LOGO EMBROIDERY



YARN DYED CHECK



CONTRAST INSIDE CUFF



CHARCOAL/BLUE

**Men's Finn Check Western Long Sleeve Shirt**

X5W111228

S, M, L, XL, XXL, 3XL, 4XL

100% Cotton Yarn Dyed Check

Classic western long sleeve shirt, snap closure, western chest pockets (one with pen holder), western front and back yokes, contrast trim on inside collar stand

\$119.95 AUD, \$144.95 NZD



SLEEVE LOGO EMBROIDERY



CHARCOAL/BLUE

**Men's Finn Check Logo Western Long Sleeve Shirt**

X5W111228

XS, S, M, L, XL, XXL, 3XL, 4XL

100% Cotton Yarn Dyed Check

Classic western long sleeve shirt, snap closure, western chest pockets (one with pen holder), western front and back yokes, contrast trim on inside collar stand and sleeve cuffs, Wrangler® iconic logo back neck embroidery

\$119.95 AUD, \$144.95 NZD



Brodie Hat XCP1961HAT, Theo Print Western Long Sleeve Shirt X5W1111229, Retro® Slim Straight Jean 88MWZJM34 - 34" LEG



NAVY/BLUE

**Men's Theo Print Western Long Sleeve Shirt**

X5W1111229

XS, S, M, L, XL, XXL, 3XL, 4XL

100% Cotton Print

Classic western long sleeve shirt, snap closure, western chest pockets (one with pen holder), western front and back yokes, contrast trim on inside collar stand

\$119.95 AUD, \$144.95 NZD



BACK NECK LOGO EMBROIDERY



GEOMETRIC PRINT



CONTRAST INSIDE CUFF

Brodie Hat XCP1961HAT, Men's Steve Print Western Long Sleeve Shirt X5W1111154, Retro® Slim Straight Jean 88MWZJM34 - 34" LEG



**Men's Steve Print Western Long Sleeve Shirt**  
X5W1111154  
XS, S, M, L, XL, XXL, 3XL, 4XL  
100% Cotton Print

Classic western long sleeve shirt, snap closure, western chest pockets (one with pen holder), western front and back yokes, contrast trim on inside collar stand

\$119.95 AUD, \$144.95 NZD

CYPRESS



BACK NECK LOGO EMBROIDERY



GEOMETRIC PRINT



CONTRAST INSIDE CUFF



Jhonson Bangora Hat (Camel) X4Y2025JHO,  
Jay Denim Western Long Sleeve Shirt X5W1111850,  
Ferris Belt XCP1975BLT, Retro® Slim Straight Jean  
88MWZJM34 - 34" LEG





Jhonson Bangora Hat (Natural) X4Y2025JHO, Beau Check Western Button Down Long Sleeve Shirt X5W1111232, Ferris Belt XCP1975BLT, Retro® Slim Straight Jean 88MWZJM34 - 34" LEG



BACK NECK LOGO EMBROIDERY



POCKET W STITCH DETAIL



DARK DENIM

**Men's Jay Denim Western Long Sleeve Shirt**

X5W1111850

XS, S, M, L, XL, XXL, 3XL, 4XL

100% Cotton Denim

Classic western long sleeve shirt, snap closure, western chest pockets (one with pen holder), western front and back yokes

\$114.95 AUD, \$137.95 NZD



BACK NECK LOGO EMBROIDERY



YARN DYED CHECK



CONTRAST INSIDE CUFF



DARK TAN/BLUE

**Men's Beau Check Western Button Down Long Sleeve Shirt**

X5W1111232

XS, S, M, L, XL, XXL, 3XL, 4XL

100% Cotton Yarn Dyed Check

Classic western button down long sleeve shirt, button closure, western chest pockets (one with pen holder), western front and back yokes, contrast trim on inside collar stand

\$119.95 AUD, \$144.95 NZD

Brodie Hat XCP1961HAT, Owen  
 Check Button Down Long Sleeve Shirt  
 X5W1115233, Monty Stretch Belt  
 X5W1976BLT, Retro® Slim Straight Jean  
 88MWZJM34 - 34" LEG



BACK NECK LOGO EMBROIDERY



YARN DYED CHECK



BLUE/WHITE

**Men's Owen Check Button Down Long Sleeve Shirt**

X5W1115233

XS, S, M, L, XL, XXL, 3XL, 4XL

98% Cotton / 2% Elastane Yarn Dyed Check

Classic button down long sleeve shirt, stretch for comfort and movement, button closure, back yoke with box pleat for comfort and movement, single chest pocket, button down collar, contrast trim on inside collar stand and sleeve cuffs

\$119.95 AUD, \$144.95 NZD



BACK NECK LOGO EMBROIDERY



GEOMETRIC PRINT



WHITE/DARK TAN

**Men's Knox Print Button Down Long Sleeve Shirt**

X5W1115234

XS, S, M, L, XL, XXL, 3XL, 4XL

98% Cotton / 2% Elastane Print

Classic button down long sleeve shirt, stretch for comfort and movement, button closure, back yoke with box pleat for comfort and movement, single chest pocket, button down collar, contrast trim on inside collar stand and sleeve cuffs

\$119.95 AUD, \$144.95 NZD



Bandera Hat X5W1911HAT (Black), Rhys Embroidered Long Sleeve Shirt X5W1113235, Ferris Belt XCP1975BLT, Retro® Slim Straight Jean 88MWZJM34 - 34" LEG

BLACK

**Men's Rhys Embroidered Long Sleeve Shirt**

X5W1113235

XS, S, M, L, XL, XXL, 3XL, 4XL

100% Cotton

Classic western long sleeve shirt with original hand drawn embroidered front and back yokes, snap closure, piping detail (on front placket, sleeve cuffs, front and back yokes)

\$139.95 AUD, \$167.95 NZD



BACK NECK LOGO EMBROIDERY



BACK YOKE HAND DRAWN EMBROIDERY



SLEEVE PLACKET LOGO EMBROIDERY



BACK NECK  
LOGO PRINT



FRONT FEATURE  
LOGO PRINT AND  
EMBROIDERY



CYPRESS

**Men's Cole  
Short Sleeve Tee**

X5W1557245

XS, S, M, L, XL, XXL,  
3XL, 4XL

100% Cotton Jersey,  
180gsm

Classic tee shape, rib neck band,  
Wrangler® iconic logo hem label

\$64.95 AUD, \$79.95 NZD



BACK NECK  
LOGO PRINT



FRONT FEATURE  
LOGO PRINT



NAVY

**Men's Adam  
Short Sleeve Tee**

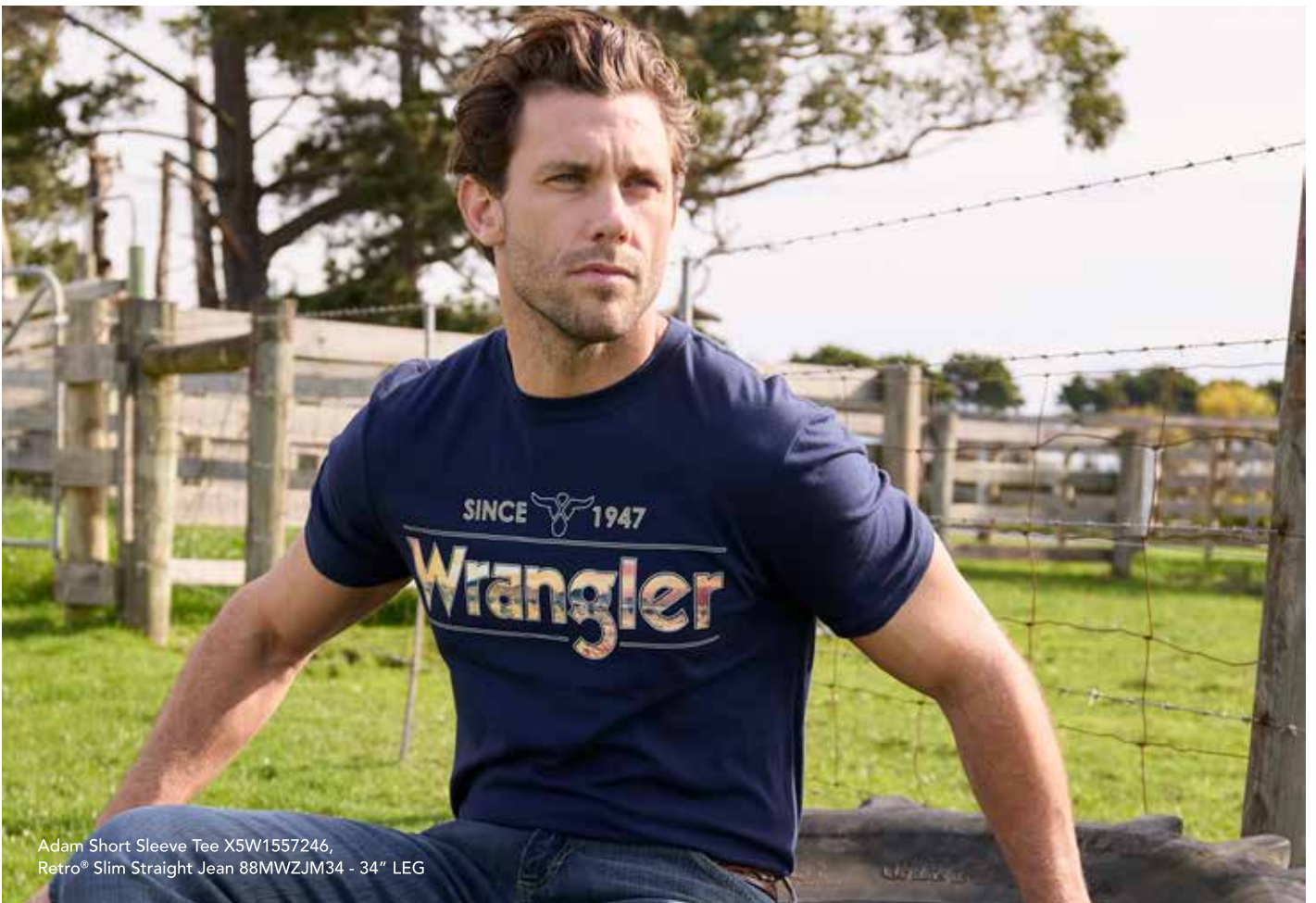
X5W1557246

XS, S, M, L, XL, XXL,  
3XL, 4XL

100% Cotton Jersey,  
180gsm

Classic tee shape, rib neck band,  
Wrangler® iconic logo hem label

\$64.95 AUD, \$79.95 NZD



Adam Short Sleeve Tee X5W1557246,  
Retro® Slim Straight Jean 88MWZJM34 - 34" LEG



BACK NECK LOGO PRINT



FRONT FEATURE LOGO PRINT



BLACK

**Men's Liam Long Sleeve Tee**

X5W1568247

XS, S, M, L, XL, XXL, 3XL, 4XL

100% Cotton Jersey, 180gsm

Long sleeve tee - ideal for all year round, rib neck band, Wrangler® iconic logo hem label

\$79.95 AUD, \$93.95 NZD



BACK NECK LOGO EMBROIDERY



FRONT FEATURE LOGO APPLIQUÉ AND PRINT



TAN MARLE/NAVY

**Men's Nico Stripe Rugby**

X5W1552240

XS, S, M, L, XL, XXL, 3XL, 4XL

100% Cotton Rugby Jersey Yarn Dyed Stripe, Peached, 330gsm

Heavyweight jersey knit rugby, concealed buttons on centre front placket, cotton drill collar with contrast underside, contrast herringbone tape trims on inside side seam splits, rib trim cuffs

\$139.95 AUD, \$167.95 NZD



BACK NECK LOGO EMBROIDERY



FRONT FEATURE LOGO APPLIQUÉ AND PRINT



BLACK/CHARCOAL MARLE

**Men's Luke Stripe Rugby**

X5W1552243

XS, S, M, L, XL, XXL, 3XL, 4XL

100% Cotton Rugby Jersey Yarn Dyed Stripe, Peached, 330gsm

Heavyweight jersey knit rugby, concealed buttons on centre front placket, cotton drill collar with contrast underside, contrast herringbone tape trims on inside side seam splits, rib trim cuffs

\$139.95 AUD, \$167.95 NZD



Liam High Profile Trucker Cap X5W1944CAP, Luke Stripe Rugby X5W1552243, Retro® Slim Straight Jean 88MWZJM34 - 34" LEG

Zane Stripe Rugby X5W1551242,  
Retro® Slim Straight Jean  
88MWZJM34 - 34" LEG



BACK NECK  
LOGO PRINT



CHEST LOGO  
PRINT



CYPRESS/NAVY

**Men's Zane  
Stripe Rugby**

X5W1551242

XS, S, M, L, XL, XXL,  
3XL, 4XL

100% Cotton Rugby  
Jersey Yarn Dyed Stripe,  
Peached, 330gsm

Heavyweight jersey knit rugby,  
concealed buttons on centre  
front placket, cotton drill collar  
with contrast underside, contrast  
herringbone tape trims on inside side  
seam splits, rib trim cuffs

\$139.95 AUD, \$167.95 NZD



BACK NECK UNDER  
COLLAR EMBROIDERY



CHEST LOGO  
EMBROIDERY  
AND PRINT



NAVY

**Men's Nash Rugby**

X5W1551244

XS, S, M, L, XL, XXL,  
3XL, 4XL

100% Cotton Rugby  
Jersey, Peached, 330gsm

Heavyweight jersey knit rugby,  
concealed buttons on centre  
front placket, cotton drill collar  
with contrast underside, contrast  
herringbone tape trims on inside side  
seam splits, rib trim cuffs

\$139.95 AUD, \$167.95 NZD



Nash Rugby X5W1551244



**Men's Dion Crew**  
**X5W1562248**  
 XS, S, M, L, XL, XXL,  
 3XL, 4XL  
 80% Cotton / 20% Polyester  
 French Terry, 280gsm

Medium weight french terry crew, rib trim (neck, hem, cuffs and side panels), contrast stripe tipping (on rib neck, hem and cuffs), Wrangler® iconic logo hem label

\$124.95 AUD, \$148.95 NZD



**Men's Alex**  
**1/4 Zip Pullover**  
**X5W1573249**  
 XS, S, M, L, XL, XXL,  
 3XL, 4XL  
 80% Cotton / 20% Polyester  
 French Terry, 280gsm

Medium weight french terry 1/4 zip pullover, contrast rib trim on inner collar facing, front welt pockets, rib trim (pockets, neck, hem and cuffs), contrast stripe tipping on rib hem and cuffs, Wrangler® iconic logo hem label

\$129.95 AUD, \$155.95 NZD



Adam High Profile Trucker Cap X5W1946CAP,  
 Tate 1/4 Zip Pullover X5W1573250, Retro® Slim  
 Straight Jean 88MWZJM34 - 34" LEG



**Men's Tate**  
**1/4 Zip Pullover**  
**X5W1573250**  
 XS, S, M, L, XL, XXL,  
 3XL, 4XL  
 80% Cotton / 20% Polyester  
 French Terry, 280gsm

Medium weight french terry 1/4 zip pullover, cut'n'sew contrast panelling with piping detail, quilted front and back yokes, rib trim hem and cuffs, Wrangler® iconic logo hem label

\$129.95 AUD, \$155.95 NZD

Ghano Beanie X5W1959BEA (Navy/Grey),  
Paul Pullover Hoodie X5W1540253, Retro® Slim  
Straight Jean 88MWZJM34 - 34" LEG



NAVY/DARK TAN

**Men's Paul  
Pullover Hoodie**

X5W1540253

XS, S, M, L, XL, XXL,  
3XL, 4XL

80% Cotton / 20% Polyester  
Brushed Fleece, 320gsm

Heavyweight brushed fleece pullover, cut'n'sew contrast panelling, contrast hood lining, hood with drawcord closure and metal trims, front kangaroo pocket, rib trim (pocket opening, hem, cuffs and side panels), Wrangler® iconic logo pocket label

\$139.95 AUD, \$167.95 NZD



BACK NECK  
LOGO PRINT



FRONT FEATURE  
LOGO APPLIQUE  
AND EMBROIDERY





BACK NECK LOGO PRINT



FRONT FEATURE LOGO PRINT



BLACK

**Men's Leon Pullover Hoodie**

X5W1540252

XS, S, M, L, XL, XXL, 3XL, 4XL

80% Cotton / 20% Polyester Brushed Fleece, 320gsm

Heavyweight brushed fleece pullover, contrast hood lining, hood with drawcord closure and metal trims, front welt pockets, rib trim (pockets, hem, cuffs and side panels), contrast stripe tipping on rib hem and cuffs, Wrangler® iconic logo hem label

\$139.95 AUD, \$167.95 NZD



BACK NECK LOGO EMBROIDERY



CHEST LOGO MOCK LEATHER BADGE



SHERPA LINED BODY AND HOOD



BLACK/MULTI

**Men's Eric Zip Through Hoodie**

X5W1770254

XS, S, M, L, XL, XXL, 3XL, 4XL

80% Cotton / 20% Polyester Brushed Fleece, 320gsm

Heavyweight brushed fleece hooded jacket, cut'n'sew contrast panelling, quilted front and back yokes, hood with drawcord closure and metal trims, front kanga patch pockets, rib trim (pocket opening, hem and cuffs), Wrangler® iconic logo pocket label

\$169.95 AUD, \$201.95 NZD



Ben High Profile Trucker Cap X5W1941CAP, Cole Short Sleeve Tee X5W1557245, Eric Zip Through Hoodie X5W1770254, Retro@ Slim Straight Jean 88MWZJM34 - 34" LEG



Jhonson Bangora Hat (Natural) X4Y2025JHO,  
Koda Reversible Vest X5W1662257, Beau  
Check Western Button Down Long Sleeve Shirt  
X5W1111232, Ferris Belt XCP1975BLT, Retro®  
Slim Straight Jean 88MWZJM34 - 34" LEG



Jhonson Bangora Hat (Natural) X4Y2025JHO,  
Koda Reversible Vest X5W1662257, Jay Denim,  
Western Long Sleeve Shirt X5W1111850, Retro®  
Slim Straight Jean 88MWZJM34 - 34" LEG

**Men's Koda Reversible Vest**

X5W1662257

XS, S, M, L, XL, XXL, 3XL, 4XL

Shell: 65% Polyester / 35% Cotton Canvas

Lining: 95% Polyester / 5% Wool Yarn

Dyed Check



Durable heavyweight canvas reversible vest, contrast internal brushed wool blend yarn dyed check, front side pockets with concealed zips lined for warmth, longer back hem



TAN/NAVY



COLLAR LOGO EMBROIDERY



YARN DYED CHECK



HEM LOGO MOCK LEATHER BADGE

\$199.95 AUD, \$236.95 NZD



Reid Logo Wool Shirt Jacket X5W1776261,  
 Adam Short Sleeve Tee X5W1557246,  
 Ferris Belt XCP1975BLT, Retro® Slim Straight  
 Jean 88MWZJM34 - 34" LEG

**Men's Reid Logo Wool Shirt Jacket**

X5W1776261

XS, S, M, L, XL, XXL, 3XL, 4XL

Shell: 95% Polyester / 5% Wool

Yarn Dyed Check

Lining: 100% Polyester Sherpa



DETACHABLE HOOD



NAVY/TAN



BACK NECK LOGO EMBROIDERY



SLEEVE LOGO EMBROIDERY



HEM LOGO MOCK LEATHER BADGE

Classic Wrangler® lumberjack style jacket, wool blend brushed yarn dyed check, internal sherpa body lining for comfort and warmth, front storm flap with zip closure

and metal snaps, chest and front side pockets with metal snaps (lined for warmth), adjustable sleeve cuffs and hem band with metal snaps, rust proof metal trims

\$299.95 AUD, \$355.95 NZD

Maredo Hat XCP1942HAT, Cain Vest X5W1671258, Knox Print Button Down Long Sleeve Shirt X5W1115234, Tommie Belt X5W1971BLT, Retro® Slim Straight Jean 88MWZJM34 - 34" LEG



**Men's Cain Vest**

X5W1671258

XS, S, M, L, XL, XXL, 3XL, 4XL

Shell: 100% Cotton Canvas

Lining: 100% Polyester Sherpa

Durable heavyweight canvas vest, contrast faux oilskin on front and back yokes, mock leather corded piping details (on front opening, pocket flaps and yokes), front storm flap with metal zip closure and metal snaps, patch pockets with metal snaps and Wrangler® W stitch detailing (lined for warmth), longer back hem, internal chest pocket and hem pocket for mobile phone, rust proof metal trims



STONE



SHERPA LINED BODY AND HOOD



DETACHABLE HOOD



BACK NECK AND POCKET LOGO MOCK LEATHER BADGE

\$199.95 AUD, \$236.95 NZD



Bandera Hat X5W1911HAT (Black), Nash Rugby X5W1551244, Cain Jacket X5W1771258, Retro® Slim Straight Jean 88MWZJM34 - 34" LEG

**Men's Cain Jacket**

X5W1771258

XS, S, M, L, XL, XXL, 3XL, 4XL

Shell: 100% Cotton Canvas

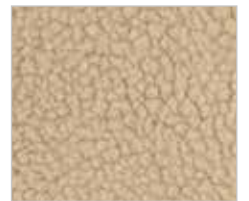
Lining: 100% Polyester Sherpa

Durable heavyweight canvas jacket, contrast faux oilskin on front and back yokes, mock leather corded piping details (on front opening, pocket flaps and yokes), front storm flap with metal zip closure and metal snaps, patch pockets with metal snaps and Wrangler® W stitch detailing (lined for warmth), adjustable sleeve cuffs with metal snaps, longer back hem, internal chest pocket and hem pocket for mobile phone, rust proof metal trims

\$279.95 AUD, \$330.95 NZD



STONE



SHERPA LINED BODY AND HOOD



DETACHABLE HOOD



BACK NECK AND POCKET LOGO MOCK LEATHER BADGE

Brodie Hat XCP1961HAT, Andrew Vest  
X5W1671259, Owen Check Button Down Long  
Sleeve Shirt X5W1115233, Retro® Slim Straight  
Jean 88MWZJM34 - 34" LEG



### Men's Andrew Vest

X5W1671259

XS, S, M, L, XL, XXL, 3XL, 4XL

Shell: 65% Polyester /  
35% Cotton Canvas

Lining: 100% Polyester

Durable heavyweight canvas vest, internal sherpa collar lining for comfort and warmth, contrast yokes and collar, contrast corded piping details on pockets and yokes, front storm flap with metal zip closure and metal snaps, side pockets (lined for warmth), longer back hem, internal chest pocket and hem pocket for mobile phone, internal quilted satin stripe lining for comfort and movement, rust proof metal trims

\$179.95 AUD, \$213.95 NZD



NAVY/CYPRESS



COLLAR LOGO  
EMBROIDERY



PIPING  
DETAIL



HEM LOGO MOCK  
LEATHER BADGE

Brodie Hat XCP1961HAT, Andrew Jacket X5W1771259, Steve Print Western Long Sleeve Shirt X5W1111154, Retro® Slim Straight Jean 88MWZJM34 - 34" LEG



**Men's Andrew Jacket**

X5W1771259

XS, S, M, L, XL, XXL, 3XL, 4XL

Shell: 65% Polyester / 35% Cotton Canvas

Lining: 100% Polyester

Durable heavyweight canvas jacket, internal sherpa collar lining for comfort and warmth, contrast yokes and collar, contrast corded piping details on pockets and yokes, front storm flap with metal zip closure and metal snaps, side pockets (lined for warmth), adjustable sleeve cuffs with metal snaps, longer back hem, internal chest pocket and hem pocket for mobile phone, internal quilted satin stripe lining for comfort and movement, rust proof metal trims

\$219.95 AUD, \$259.95 NZD



NAVY/CYPRESS



COLLAR LOGO EMBROIDERY



SLEEVE LOGO EMBROIDERY



HEM LOGO MOCK LEATHER BADGE



Mt. Mansfield

Bandera Hat X5W1911HAT (Black), Cade Logo  
Softshell Jacket X5W1773262, Finn Check Logo  
Western Long Sleeve Shirt X5W1111228,  
Retro® Slim Straight Jean 88MWZJM34 - 34" LEG



**Men's Cade Logo Softshell Jacket**

X5W1773262

XS, S, M, L, XL, XXL, 3XL, 4XL

Shell: 95% Polyester / 5% Elastane Soft Shell

Lining: 100% Polyester

Breathable, softshell fabric - waterproof, Wrangler® iconic logo sleeve print, contrast corded piping detail on yokes and side pocket openings, front storm flap with zip closure and metal snaps, chest pocket with logo zip pull (lined for warmth), sleeves with rib to keep in warmth, longer back hem, rib collar facing for warmth

\$219.95 AUD, \$259.95 NZD



BLACK



DETACHABLE HOOD



BACK NECK LOGO PRINT



PRINTED POLAR FLEECE LINING FOR COMFORT AND WARMTH



PATCH POCKET W STITCH DETAILING



Bandera Hat X5W1911HAT (Black), Cade Logo Softshell Jacket X5W1773262, Finn Check Logo Western Long Sleeve Shirt X5W111228, Retro® Slim Straight Jean 88MWZJM34 - 34" LEG



Brodie Hat XCP1961HAT, Evan Denim Jacket X5W1775260, Theo Print Western Long Sleeve Shirt X5W1111229, Retro® Slim Straight Jean 88MWZJM34 - 34" LEG

**Men's Evan Denim Jacket**

X5W1775260

XS, S, M, L, XL, XXL, 3XL, 4XL

Shell: 99% Cotton / 1% Elastane Denim

Lining: 100% Polyester

Classic Wrangler® trucker style denim jacket, stretch for comfort and movement, sherpa collar for warmth, front side welt pockets, adjustable sleeve cuffs and hem band with metal snaps, internal chest pocket, rust proof metal trims

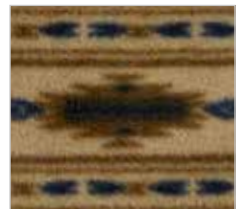
\$219.95 AUD, \$259.95 NZD



DENIM



POCKET AND FRONT PLACKET METAL SNAPS



PRINTED POLAR FLEECE LINING FOR COMFORT AND WARMTH



BACK NECK LOGO MOCK LEATHER BADGE



Hugo Check Logo Western Long Sleeve Shirt  
X5W1111225, Ferris Belt XCP1975BLT, Jimmy  
Tailored 5-Pocket Pant 34" Leg X5W1225263



5-POCKET  
TAILORED  
PANT  
34" LEG

SAND

NAVY

**Men's Jimmy Tailored  
5-Pocket Pant**

X5W1225263

30, 32, 34, 36, 38, 40, 42, 44

98% Cotton / 2% Elastane,  
8.5oz

\$129.95 AUD, \$155.95 NZD

5 pocket jean style pant in premium twill fabric - 34" leg, tailored leg fit - slimmer through seat and leg, bias cut waistband for extra comfort, stretch for comfort and movement, double stitched for strength, deep front pockets, twin back belt loops, rust proof metal accessories



BACK POCKET  
W STITCH DETAILING



BACK WAISTBAND  
MOCK LEATHER LABEL



# GIRL'S



Phoebe Check Logo Western Long Sleeve Shirt  
X5W5129289, Abrasion Logo Belt XCP3902BEL,  
Retro® Boot Cut Jean 09MWGMSREG



Vaquerita Hat (Black) X5W7971HAT,  
Phoebe Check Logo Western Long Sleeve Shirt  
X5W5129289, Abrasion Logo Belt XCP3902BEL,  
Retro® Boot Cut Jean 09MWGMSREG



Valerie Print Logo Long Sleeve Shirt X5W5126337, Abrasion Logo Belt XCP3902BEL, Retro® Boot Cut Jean 09MWGMSREG



BACK NECK LOGO EMBROIDERY



YARN DYED CHECK



SLEEVE LOGO EMBROIDERY



PINK

**Girl's Phoebe Check Logo Western Long Sleeve Shirt**

X5W5129289

2, 4, 6, 8, 10, 12, 14

100% Cotton Yarn Dyed Check

Western long sleeve shirt, puff sleeve detail with gathered sleeve head, pearl snap closure, western chest pockets, western front and back yokes, Wrangler® logo pip on side seam

\$79.95 AUD, \$105.95 NZD



BACK NECK LOGO PRINT



ORIGINAL HAND DRAWN CACTUS PRINT



SLEEVE LOGO EMBROIDERY



IVORY

**Girl's Valerie Print Logo Long Sleeve Shirt**

X5W5126337

2, 4, 6, 8, 10, 12, 14

100% Viscose Print

Classic button down long sleeve shirt, button closure, Wrangler® logo pip on side seam, soft handfeel and drape

\$79.95 AUD, \$105.95 NZD



BACK NECK METALLIC LOGO PRINT



FRONT FEATURE ORIGINAL HAND DRAWN METALLIC DETAIL PRINT



PINK

**Girl's Giselle Short Sleeve Tee**

X5W5598291

2, 4, 6, 8, 10, 12, 14

100% Cotton Jersey  
180gsm

Classic tee shape with rolled sleeve hem detail, rib neck band, Wrangler® logo pip on side seam

\$49.95 AUD, \$66.95 NZD



Giselle Short Sleeve Tee X5W5598291,  
Retro® Boot Cut Jean 09MWGMSREG



BACK NECK LOGO EMBROIDERY



CHEST METALLIC LOGO EMBROIDERY



NAVY/MULTI

**Girl's Camden Stripe Rugby**

X5W5577303

2, 4, 6, 8, 10, 12, 14

100% Cotton Rugby  
Jersey Yarn Dyed Stripe,  
Peached, 330gsm

Heavyweight jersey knit rugby, concealed buttons on centre front placket, cotton drill collar, Wrangler® iconic logo herringbone tape on back neck and inside side seam splits, rib trim cuffs

\$109.95 AUD, \$130.95 NZD



Camden Stripe Rugby X5W5577303,  
Retro® Boot Cut Jean 09MWGEREG





Vaquerita Hat (Natural) X5W7971HAT,  
 Tabitha Crew X5W5527305, Phoebe Check  
 Western Long Sleeve Shirt X5W5129289,  
 Retro® Boot Cut Jean 09MWGMSREG

TURQUOISE

**Girl's Tabitha Crew**

X5W5527305

2, 4, 6, 8, 10, 12, 14

80% Cotton /  
 20% Polyester Brushed  
 Fleece, 320gsm

Heavyweight brushed fleece crew,  
 rib trim hem, with stripe neck and  
 cuff detail, Wrangler® logo pip on  
 side seam

\$69.95 AUD, \$91.95 NZD



BACK NECK LOGO  
 EMBROIDERY



FRONT FEATURE LOGO  
 BOUCLÉ APPLIQUÉ AND  
 EMBROIDERY



Tori High Profile Ponytail Trucker Cap  
X5W5948CAP, Bella Pullover Hoodie X5W5597328,  
Retro® Boot Cut Jean 09MWGMSREG



Daisy Pullover Hoodie X5W5597329,  
Retro® Boot Cut Jean 09MWGERREG



FRONT FEATURE  
METALLIC LOGO  
EMBROIDERY



PINK

**Girl's Bella Pullover Hoodie**

X5W5597328

2, 4, 6, 8, 10, 12, 14

80% Cotton /  
20% Polyester Brushed  
Fleece, 320gsm

Heavyweight brushed fleece pullover, cut'n'sew contrast panelling, front kanga patch pocket, rib trim hem and cuffs, Wrangler® logo pip on side seam

\$84.95 AUD, \$112.95 NZD



FRONT FEATURE  
LOGO APPLIQUÉ



NAVY

**Girl's Daisy Pullover Hoodie**

X5W5597329

2, 4, 6, 8, 10, 12, 14

80% Cotton /  
20% Polyester Brushed  
Fleece, 320gsm

Heavyweight brushed fleece pullover, front kanga patch pocket, rib trim hem and cuffs, Wrangler® logo pip on side seam

\$84.95 AUD, \$112.95 NZD

# BOY'S





Vaquerita Hat (Black) X5W7971HAT,  
Adam Short Sleeve Tee X5W3557246,  
Abrasion Logo Belt XCP3902BEL, Retro®  
Slim Straight Jean (Jerome) 88JWZJMREG

Vaquerita Hat (Black) X5W7971HAT,  
Finn Check Logo Western Long Sleeve  
Shirt X5W3111228, Abrasion Logo Belt  
XCP3902BEL, Retro® Slim Straight  
Jean (Jerome) 88JWZJMREG





Vaquerita Hat (Black) X5W7971HAT,  
Noah Check Western Long Sleeve Shirt  
X5W3111230, Abrasion Logo Belt XCP3902BEL,  
Retro® Slim Straight Jean (Jerome) 88JWZJMREG



BACK NECK LOGO EMBROIDERY



YARN DYED CHECK



SLEEVE LOGO EMBROIDERY



CHARCOAL/BLUE

Classic western long sleeve shirt, snap closure, western chest pockets, western front and back yokes, contrast trim on inside collar stand and sleeve cuffs

\$79.95 AUD, \$105.95 NZD



BACK NECK LOGO EMBROIDERY



YARN DYED CHECK



ROYAL/RED

Classic western long sleeve shirt, snap closure, western chest pockets, western front and back yokes, contrast trim on inside collar stand and sleeve cuffs

\$79.95 AUD, \$105.95 NZD

**Boy's Finn Check Logo Western Long Sleeve Shirt**

X5W3111228

2, 4, 6, 8, 10, 12, 14

100% Cotton Yarn Dyed Check

**Boy's Noah Check Western Long Sleeve Shirt**

X5W3111230

2, 4, 6, 8, 10, 12, 14

100% Cotton Yarn Dyed Check



Vaquerita Hat (Black) X5W7971HAT,  
 Adam Short Sleeve Tee X5W3557246,  
 Abrasion Logo Belt XCP3902BEL,  
 Retro® Slim Straight Jean (Jerome) 88JWZJMREG



BACK NECK  
 LOGO PRINT



FRONT FEATURE  
 LOGO PRINT



NAVY

**Boy's Adam Short Sleeve Tee**

X5W3557246

2, 4, 6, 8, 10, 12, 14

100% Cotton Jersey,  
 180gsm

Classic tee shape, rib neck band,  
 Wrangler® iconic logo hem label

\$49.95 AUD, \$66.95 NZD



BACK NECK  
 LOGO PRINT



FRONT FEATURE  
 LOGO PRINT AND  
 EMBROIDERY



CYPRESS

**Boy's Cole Short Sleeve Tee**

X5W3557245

2, 4, 6, 8, 10, 12, 14

100% Cotton Jersey,  
 180gsm

Classic tee shape, rib neck band,  
 Wrangler® iconic logo hem label

\$49.95 AUD, \$66.95 NZD



Brando Trucker Cap X5W3951CAP, Cole Short Sleeve Tee X5W3557245, Retro® Slim Straight Jean (Jerome) 88JWZJMREG





Paul Pullover Hoodie X5W3540253,  
Abrasion Logo Belt XCP3902BEL,  
Retro® Slim Straight Jean (Jerome) 88JWZJMREG



Tate 1/4 Zip Pullover X5W3573250,  
Retro® Slim Straight Jean (Jerome) 88JWZJMREG



BACK NECK LOGO EMBROIDERY



FRONT FEATURE LOGO APPLIQUE, EMBROIDERY AND PRINT



NAVY/DARK TAN

**Boy's Paul Pullover Hoodie**  
X5W3540253

2, 4, 6, 8, 10, 12, 14

80% Cotton / 20% Polyester  
Brushed Fleece, 320gsm

Heavyweight brushed fleece pullover, cut'n'sew contrast panelling, front kanga patch pocket, rib trim (pocket opening, hem and cuffs), Wrangler® iconic logo pocket label

\$89.95 AUD, \$116.95 NZD



BACK NECK LOGO PRINT



CHEST LOGO PRINT



SLEEVE LOGO PRINT



DARK TAN/NAVY

**Boy's Tate 1/4 Zip Pullover**  
X5W3573250

2, 4, 6, 8, 10, 12, 14

80% Cotton / 20% Polyester  
French Terry, 280gsm

Medium weight french terry 1/4 zip pullover, cut'n'sew contrast panelling with piping detail, quilted front and back yokes, rib trim hem and cuffs, Wrangler® iconic logo hem label

\$89.95 AUD, \$116.95 NZD

# ACCESSORIES

He wears: Ben High Profile Trucker Cap  
X5W1941CAP, Cole Short Sleeve Tee  
X5W1557245, Eric Zip Through Hoodie  
X5W1770254, Retro® Slim Straight Jean  
88MWZJM34 - 34" LEG

She wears: Erica Knitted Cardigan  
X5W2533325, Layla Short Sleeve Tee  
(Copper) X5W2598290, Jhonson Bangora  
Hat (Camel) X4Y2025JHO, Tia Straight Leg  
Jean X5W2257351 - 34" LEG



Petra High Profile Ponytail Trucker Cap  
 X5W2940CAP, Eliza Stripe Rugby X5W2577299



OLIVE

**Petra High Profile  
 Ponytail Trucker Cap**  
 X5W2940CAP

One Size

Main: 100% Cotton

Peak: 100% Cotton

Mesh: 100% Polyester

High profile 5 panel trucker cap, front multi-colour Wrangler® iconic logo embroidery, yardage printed mesh panels, contrast sandwich peak

\$39.95 AUD, \$47.95 NZD



BACK  
 EMBROIDERY



PONYTAIL  
 HOLE





BACK EMBROIDERY



FRONT MOCK LEATHER BADGE



PONYTAIL HOLE



NAVY

High profile 5 panel trucker cap, yardage printed mesh panels, contrast sandwich peak

**Elise High Profile Ponytail Trucker Cap**

X5W2939CAP

One Size

Main: 100% Cotton

Peak: 100% Cotton

Mesh: 100% Polyester

\$39.95 AUD, \$47.95 NZD



Elise High Profile Ponytail Trucker Cap X5W2939CAP, Kylie Crew X5W2587311



BACK EMBROIDERY



FRONT MOCK LEATHER BADGE



PONYTAIL HOLE



AQUA/NAVY

High profile 5 panel trucker cap, yardage printed mesh panels, contrast peak, contrast sandwich peak

**Quinn High Profile Ponytail Trucker Cap**

X5W2943CAP

One Size

Main: 100% Cotton

Peak: 100% Cotton

Mesh: 100% Polyester

\$39.95 AUD, \$47.95 NZD



Quinn High Profile Ponytail Trucker Cap X5W2943CAP, Trista Stripe Rugby X5W2577330



BACK EMBROIDERY



FRONT LOGO EMBROIDERY



PONYTAIL HOLE



PINK

High profile 5 panel trucker cap, contrast mesh panels, contrast sandwich peak

\$39.95 AUD, \$47.95 NZD

**Perry High Profile Ponytail Trucker Cap**

X5W2947CAP

One Size

Main: 100% Cotton

Peak: 100% Cotton

Mesh: 100% Polyester



BACK EMBROIDERY



FRONT LOGO EMBROIDERY



PINK

High profile 5 panel trucker cap, contrast sandwich peak, side panel taping

\$39.95 AUD, \$47.95 NZD

**Jamie High Profile Trucker Cap**

X5W2944CAP

One Size

Main: 100% Cotton

Peak: 100% Cotton

Mesh: 100% Polyester



BACK EMBROIDERY



FRONT EMBROIDERY



STONE

High profile 5 panel trucker cap, contrast sandwich peak, side panel taping

\$39.95 AUD, \$47.95 NZD

**Asher High Profile Trucker Cap**

X5W2941CAP

One Size

Main: 100% Cotton

Peak: 100% Cotton

Mesh: 100% Polyester



Asher High Profile Trucker Cap X5W2941CAP





BACK EMBROIDERY



FRONT EMBROIDERY



BROWN

**Taryn High Profile Trucker Cap**

X5W2946CAP

One Size

Main: 100% Cotton

Peak: 100% Cotton

Mesh: 100% Polyester

High profile 5 panel trucker cap, contrast sandwich peak, side panel taping

\$39.95 AUD, \$47.95 NZD



Taryn High Profile Trucker Cap X5W2946CAP, Layla Short Sleeve Tee (Copper) X5W2598290



BACK EMBROIDERY



FRONT LOGO METALLIC EMBROIDERY



NAVY

**Shanice Trucker Cap**

X5W2942CAP

One Size

Main: 100% Cotton

Peak: 100% Cotton

Mesh: 100% Polyester

5 Panel trucker cap, contrast sandwich peak, side panel taping

\$39.95 AUD, \$47.95 NZD



Shanice Trucker Cap X5W2942CAP, Claudia Long Sleeve Tee X5W2598292



BACK EMBROIDERY



FRONT EMBROIDERY



DENIM BLUE



Loretta Trucker Cap X5W2945CAP

**Loretta Trucker Cap**

X5W2945CAP

One Size

Main: 100% Cotton

Peak: 100% Cotton

Mesh: 100% Polyester

5 Panel trucker cap, contrast sandwich peak, side panel taping

\$39.95 AUD, \$47.95 NZD



BACK EMBROIDERY



FRONT LOGO EMBROIDERY



CHARCOAL MARLE



Ben High Profile Trucker Cap X5W1941CAP,  
Cole Short Sleeve Tee X5W1557245



**Ben High Profile Trucker Cap**

X5W1941CAP

One Size

100% Polyester

High profile 5 panel trucker cap, peak with tonal printed logo yardage, contrast sandwich peak, contrast crown piping

\$39.95 AUD, \$47.95 NZD



BACK EMBROIDERY



FRONT LOGO AND STEER HEAD EMBROIDERY



NAVY



BACK EMBROIDERY



FRONT LOGO EMBROIDERY AND FLOCKING



CYPRESS



**Sam High Profile Trucker Cap**

X5W1942CAP

One Size

Main: 100% Cotton  
Peak: 65% Polyester / 35% Cotton Faux Oilskin  
Mesh: 100% Polyester

High profile 5 panel trucker cap, faux oilskin contrast peak, contrast sandwich peak

\$39.95 AUD, \$47.95 NZD

**Cole High Profile Trucker Cap**

X5W1943CAP

One Size

Main: 100% Cotton  
Peak: 100% Cotton  
Mesh: 100% Polyester

High profile 5 panel trucker cap, peak with contrast top stitching, contrast sandwich peak, side panel taping, contrast crown piping

\$39.95 AUD, \$47.95 NZD



BACK EMBROIDERY



FRONT LOGO PRINT



BLACK



**Liam High Profile Trucker Cap**

X5W1944CAP

One Size

Main: 100% Cotton  
Peak: 100% Cotton  
Mesh: 100% Polyester

High profile 5 panel trucker cap, contrast sandwich peak, side panel taping, contrast crown piping

\$39.95 AUD, \$47.95 NZD



Liam High Profile Trucker Cap X5W1944CAP, Luke Stripe Rugby X5W1552243



BACK EMBROIDERY



FRONT LOGO EMBROIDERY



NAVY/DARK TAN



BACK EMBROIDERY



FRONT LOGO EMBROIDERED BADGE



CYPRESS



**Ralph High Profile Trucker Cap**

X5W1945CAP

One Size

Main: 100% Cotton

Peak: 100% Cotton

Mesh: 100% Polyester

High profile 5 panel trucker cap, peak with tonal printed logo yardage, and contrast top stitching, contrast sandwich peak, side panel taping

\$39.95 AUD, \$47.95 NZD

**Steve 6 Panel Trucker Cap**

X5W1949CAP

One Size

Main: 100% Cotton

Peak: 100% Cotton

Mesh: 100% Polyester

6 Panel trucker cap, contrast peak with contrast top stitching, contrast sandwich peak, side panel taping

\$39.95 AUD, \$47.95 NZD

Mason 6 Panel Trucker Cap X5W1947CAP,  
Men's Milo Check Logo Western Long  
Sleeve Shirt X5W1111227



BACK EMBROIDERY



FRONT LOGO EMBROIDERED BADGE



NAVY



**Mason 6 Panel Trucker Cap**

X5W1947CAP

One Size

Main: 100% Cotton

Peak: 100% Cotton

Mesh: 100% Polyester

6 Panel trucker cap, front tonal printed stripe, peak with print, contrast sandwich peak, side panel taping

\$39.95 AUD, \$47.95 NZD



Adam High Profile Trucker Cap X5W1946CAP,  
Tate 1/4 Zip Pullover X5W1573250

**Adam High Profile  
Trucker Cap**  
X5W1946CAP

One Size

Main: 100% Cotton

Peak: 100% Cotton

Mesh: 100% Polyester

High profile 5 panel trucker cap,  
peak with contrast top stitching,  
contrast sandwich peak, side  
panel taping

\$39.95 AUD, \$47.95 NZD

BLACK



BACK  
EMBROIDERY



FRONT LOGO  
APPLIQUE AND PRINT



Tori High Profile Ponytail Trucker Cap  
 X5W5948CAP, Bella Pullover Hoodie  
 X5W5597328, Retro® Boot Cut Jean  
 09MWGMSREG



BACK EMBROIDERY



FRONT LOGO METALLIC EMBROIDERY AND SEQUIN DETAIL



NAVY/PINK



BACK EMBROIDERY



FRONT LOGO METALLIC DETAIL EMBROIDERY



PINK

**Kid's Tori High Profile Ponytail Trucker Cap**  
 X5W5948CAP

One Size

Main: 100% Cotton

Peak: 100% Cotton

Mesh: 100% Polyester

High profile 5 panel trucker cap, ponytail hole, recommended for 4 years and over, yardage printed mesh panels, contrast peak, contrast sandwich peak

\$39.95 AUD, \$47.95 NZD

**Kid's Lauren Trucker Cap**  
 X5W5949CAP

One Size

Main: 100% Cotton

Peak: 100% Cotton

Mesh: 100% Polyester

5 Panel trucker cap, peak with contrast stitching, contrast sandwich peak, side panel taping

\$39.95 AUD, \$47.95 NZD

Brando Trucker Cap X5W3951CAP,  
Cole Short Sleeve Tee X5W3557245



NAVY

**Kid's Brando  
Trucker Cap**  
X5W3951CAP

One Size

Main: 100% Cotton

Peak: 100% Cotton

Mesh: 100% Polyester

5 Panel trucker cap, peak with  
contrast stitching, contrast sandwich  
peak, side panel taping

\$39.95 AUD, \$47.95 NZD



BACK  
EMBROIDERY



FRONT LOGO AND  
STEER HEAD  
EMBROIDERY

Ghano Beanie (Navy/Pink) X5W1959BEA,  
Claudia Long Sleeve Tee X5W2598292,  
Selma Shirt Jacket X5W2776318, Blair Trouser  
Jean - Mae XCP2253350 - 34" LEG







Ghano Beanie X5W1959BEA (Navy/Grey),  
Paul Pullover Hoodie X5W1540253



Ghano Beanie X5W7959BEA (Navy/Grey),  
Tate 1/4 Zip Pullover X5W3573250



MOCK LEATHER  
BADGE



NAVY/GREY



NAVY/PINK

**Ghano Beanie**  
X5W1959BEA

One Size  
75% Acrylic / 25% Polyester

2 Tone marle effect knitted beanie

\$39.95 AUD, \$47.95 NZD



MOCK LEATHER  
BADGE



NAVY/GREY



NAVY/PINK

**Kid's Ghano Beanie**  
X5W7959BEA

One Size  
75% Acrylic / 25% Polyester

2 Tone marle effect knitted beanie

\$39.95 AUD, \$47.95 NZD

Athena Short Sleeve Tee X5W2598293,  
Moree Belt (Dark Tan) X5W2911BLT,  
Tia Straight Leg Jean X5W2257351 - 34" LEG





DARK TAN

**Moree Belt**

X5W2911BLT

28, 30, 32, 34, 36, 38, 40, 42, 44 (inches)

Genuine Leather

Tooled strap with cutout, metallic inlay, removable buckle, Wrangler® iconic logo concho, silver hardware

\$129.95 AUD, \$155.95 NZD



CHOCOLATE

**Danica Belt**

X5W2923BLT

28, 30, 32, 34, 36, 38, 40, 42, 44 (inches)

Genuine Leather

Stud pattern, turquoise studs, removable buckle, Wrangler® iconic logo concho, antique silver hardware

\$129.95 AUD, \$155.95 NZD



TAN

**Adele Belt**

X5W2921BLT

28, 30, 32, 34, 36, 38, 40, 42, 44 (inches)

Genuine Leather

Tooled strap, removable feature buckle, Wrangler® iconic logo concho, antique silver hardware

\$129.95 AUD, \$155.95 NZD



Valerie Long Sleeve Shirt X5W2126337, Adele Belt X5W2921BLT, Verity Jean - Willow XCP2251352 - 34" LEG



Jhonson Bangora Hat (Camel) X4Y2025JHO, Chrissy Western Long Sleeve Shirt X5W2127288, Lindy Belt X5W2924BLT, Blair Trouser Jean - Mae XCP2253350 - 34" LEG



DARK TAN

**Lindy Belt**

X5W2924BLT

28, 30, 32, 34, 36, 38, 40, 42, 44 (inches)

Genuine Leather

Tooled strap with cutout, turquoise studs, removable buckle, Wrangler® iconic logo concho, antique silver hardware

\$109.95 AUD, \$130.95 NZD



TAN

**Hallina Belt**

X5W2925BLT

28, 30, 32, 34, 36, 38, 40, 42, 44 (inches)

Genuine Leather

Tooled strap, dome studs, removable buckle, Wrangler® iconic logo concho, antique silver hardware

\$109.95 AUD, \$130.95 NZD



BLACK

**Azalea Belt**

X5W2964BLT

28, 30, 32, 34, 36, 38, 40, 42, 44 (inches)

Genuine Leather

Tooled strap with cutout, removable feature buckle, Wrangler® iconic logo concho, antique silver hardware

\$109.95 AUD, \$130.95 NZD

He wears: Maredo Hat XCP1942HAT,  
 Knox Print Button Down Long Sleeve Shirt  
 X5W1115234, Tommie Belt X5W1971BLT,  
 Retro® Slim Straight Jean 88MWZJM34 - 34" LEG  
 She wears: Maredo Hat XCP1942HAT,  
 Phoebe Check Long Sleeve Shirt  
 X5W2129289, Adele Belt X5W2921BLT,  
 Tia Straight Leg Jean X5W2257351 - 34" LEG



**Tommie Belt**

X5W1971BLT

28, 30, 32, 34, 36, 38, 40,  
 42, 44 (inches)

Genuine Leather

Tooled centre strap insert, ostrich  
 embossed tab ends, plaited edging,  
 removable buckle, Wrangler® iconic  
 logo concho, antique silver hardware

\$129.95 AUD, \$155.95 NZD



BLACK



PRICES ARE RRP



Bandera Hat X5W1911HAT (Black), Finn Check Logo Western Long Sleeve Shirt X5W1111228, Rory Belt X5W1972BLT, Retro® Slim Straight Jean 88MWZJM34 - 34" LEG

**Rory Belt**

X5W1972BLT

28, 30, 32, 34, 36, 38, 40, 42, 44 (inches)

Genuine Leather

Stitch detail, feature concho on tabs, removable buckle, Wrangler® iconic logo concho, antique silver hardware

\$129.95 AUD, \$155.95 NZD



DARK TAN





LIGHT TAN

**Keegan Belt**

X5W1974BLT

28, 30, 32, 34, 36, 38, 40, 42, 44 (inches)

Genuine Leather

Tooled strap, removable buckle, Wrangler® iconic logo concho, antique silver hardware

\$109.95 AUD, \$130.95 NZD



TAN

**Ferris Belt**

XCP1975BLT

28, 30, 32, 34, 36, 38, 40, 42, 44 (inches)

Genuine Leather

Tooled strap and tab ends, removable buckle, Wrangler® iconic logo concho, antique silver hardware

\$129.95 AUD, \$155.95 NZD

**NEW STOCKLINES**



**STRETCHABLE**



TAN/BLACK

**Monty Stretch Belt**

X5W1976BLT

28, 30, 32, 34, 36, 38, 40, 42, 44 (inches)

Genuine Leather

Stretch weave strap for comfort, tooled tab ends, removable buckle, Wrangler® iconic logo concho, antique silver hardware

\$129.95 AUD, \$155.95 NZD



Bandera Hat X5W1911HAT (Black), Rhys Embroidered Long Sleeve Shirt X5W1113235, Ferris Belt XCP1975BLT, Retro® Slim Straight Jean 88MWZJM34 - 34" LEG



Neave Long Sleeve Blouse X5W2513333,  
Amelia Bag X5W2935BAG,  
Verity Jean - Willow XCP2251352 - 34" LEG



BACK

CHOCOLATE

**Amelia Bag**  
X5W2935BAG

One size - 21cm (W)  
X 13.5cm (H)  
PU

Tooled front panel, suede side fringing, top zip opening, back zip pocket, 2 x internal card pockets, internal zip pocket, detachable wristlet, detachable and adjustable crossbody strap, Wrangler® metal badge, fully lined

\$99.95 AUD, \$121.95 NZD



Lindsey Long Sleeve Blouse X5W2543295,  
Natalie Wallet Bag X5W2936BAG,  
Verity Jean - Willow XCP2251352 - 34" LEG



BACK

CHOCOLATE



**Natalie Wallet Bag**  
X5W2936BAG

One Size - 12cm (W)  
X 18.5cm (H) X 3cm (D)  
PU

Tooled front panel, zip around closure, removable and adjustable strap, 11 x card slots and 1 x ID slot, 4 x note pockets, 1 x back zip pocket, Wrangler® metal logo badge, **RFID PROTECT** technology protects your credit cards from fraud and identity theft

\$89.95 AUD, \$105.95 NZD





BACK



TAN/NATURAL

**Carmen Bag**

X5W2944BAG

One size - 24cm (W)  
X 27cm (H) x 11cm (D),  
PU

Printed canvas front panel, suede whipstitch, top zip opening, dome studs, back zip pocket, internal zip and slip pockets, shoulder strap, metal feet on base, Wrangler® metal badge, fully lined

\$129.95 AUD, \$155.95 NZD



BACK



TAN/NATURAL



**Carmen Wallet**

X5W2945WLT

One Size - 18cm (W)  
X 10cm (H)  
PU

Printed canvas front panel, suede whipstitch, dome studs, zip around opening, 10 x card slots and 2 x ID slots, 2 x note pockets, internal zip pocket, Wrangler® metal badge, **RFID PROTECT** technology protects your credit cards from fraud and identity theft  
\$74.95 AUD, \$86.95 NZD



Bridie Long Sleeve Blouse X5W2513332,  
Carmen Bag X5W2944BAG, Verity Jean - Willow  
XCP2251352 - 34" LEG



FRONT



TAN/BLACK



BACK

**Sawyer Wallet**

X5W1985WLT

One Size - 11.5cm (W)  
X 9cm (H)

Genuine Leather

Bifold closure, basketweave emboss, contrast tab, 6 x card slots and 1 x ID slot, 2 x note pockets, coin pocket with snap closure, 1 x zip pocket, Wrangler® iconic logo concho, **RFID PROTECT** technology protects your credit cards from fraud and identity theft

\$119.95 AUD, \$144.95 NZD



FRONT



TAN/BLACK



BACK

**Sawyer Rodeo Wallet**

X5W1986WLT

One Size - 9.5cm (W)  
X 18cm (H)

Genuine Leather

Bifold closure, basketweave emboss, contrast tab, 6 x card slots and 1 x ID slot, 3 x note pockets, 1 x zip pocket, Wrangler® iconic logo concho, **RFID PROTECT** technology protects your credit cards from fraud and identity theft

\$119.95 AUD, \$144.95 NZD

Jhonson Bangora Hat (Camel) X4Y2025JHO, Astrid Check Western Long Sleeve Shirt X5W2127336, Lindy Belt X5W2924BLT, Blair Trousler Jean - Mae XCP2253350 - 34" LEG



**Jhonson Bangora Hat**

X4Y2025JHO

53, 54, 55, 56, 57, 58, 59, 60, 61 (cm)

Crown Height: 11.5cm

Brim Width: 10cm

Paper

Crown pattern detail, eyelets for ventilation, water and stain resistant, leather sweatband, Wrangler® metal logo pin

**NEW STOCKLINES**

\$109.95 AUD, \$130.95 NZD



CAMEL

PRICES ARE RRP



Bandera Hat X5W1911HAT (Black), Cade Logo Softshell Jacket X5W1773262, Finn Check Logo Western Long Sleeve Shirt X5W111228



BLACK



NATURAL

**Bandera Hat**

X5W1911HAT

53, 54, 55, 56, 57, 58, 59, 60, 61 (cm)

Crown Height: 11cm

Brim Width: 9.5cm

100% Cotton

Durable coated cotton canvas, water and stain resistant, comfort tech moisture wicking sweatband, Wrangler® metal logo pin

\$99.95 AUD, \$121.95 NZD



Vaquerita Hat (Natural) X5W7971HAT, Phoebe Check Western Long Sleeve Shirt X5W5129289, Tabitha Crew X5W5527305, Retro® Boot Cut Jean 09MWGMSREG



BLACK



NATURAL

**Kid's Vaquerita Hat**

X5W7971HAT

One Size

Crown height: 10cm

Brim width: 9cm

100% Cotton

Durable coated cotton canvas, water and stain resistant, elastic sweatband, Wrangler® metal logo pin

\$79.95 AUD, \$107.95 NZD

Vaquerita Hat (Black) X5W7971HAT,  
Finn Check Logo Western Long Sleeve  
Shirt X5W3111228, Abrasion Logo Belt  
XCP3902BEL, Retro® Slim Straight  
Jean (Jerome) 88JWZJMREG

**Back Cover Image:**

Brodie Hat XCP1961HAT, Evan Denim Jacket  
X5W1775260, Theo Print Western Long Sleeve  
Shirt X5W1111229, Retro® Slim Straight Jean  
88MWZJM34 - 34" LEG







Demi Jacket X5W2798319,  
Freya Knitted Pullover X5W2535326,  
Blair Trouser Jean - Mae XCP2253350 - 34" LEG

PRICES ARE RRP



# Wrangler®

Thomas Cook Boot & Clothing Co. 8/100 Station Street, Nunawading, Victoria 3131 Australia  
P 03 8872 7272 F 03 8872 7273 E sales@thomascook.com.au  
Connect with us on [facebook.com/WranglerWesternAustralia](https://www.facebook.com/WranglerWesternAustralia) [instagram wranglerwesternau](https://www.instagram.com/wranglerwesternau)

View the full range at [www.wrangler-western.com.au](http://www.wrangler-western.com.au)

Made under license from Kontoor Brands USA & HK. Distributed by Thomas Cook Boot & Clothing Co, Licensee.

X5WPGMAR25



9 348537 738166